



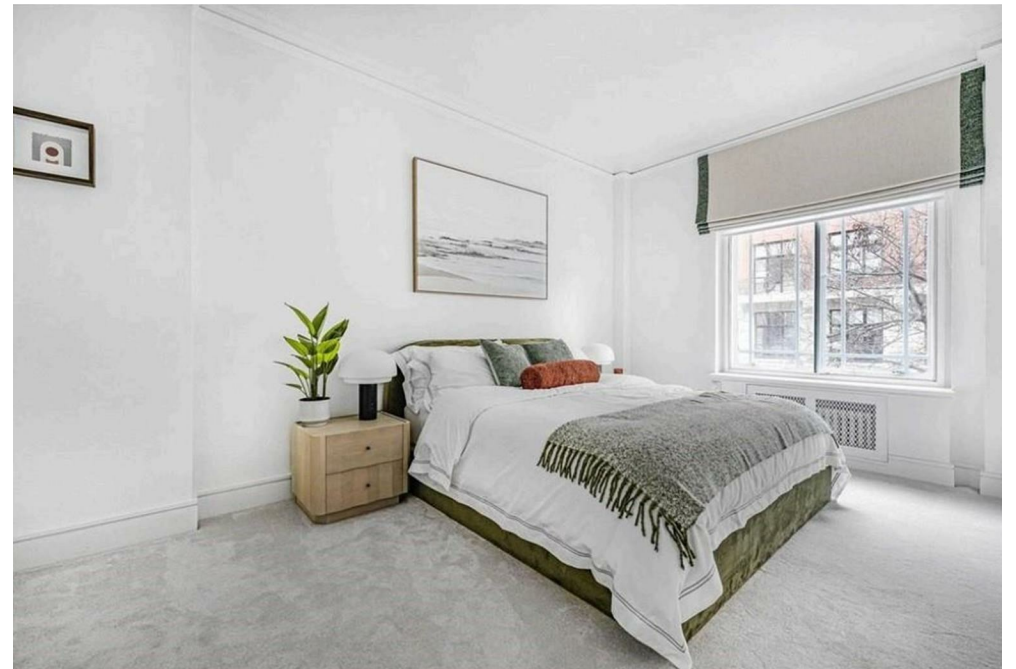
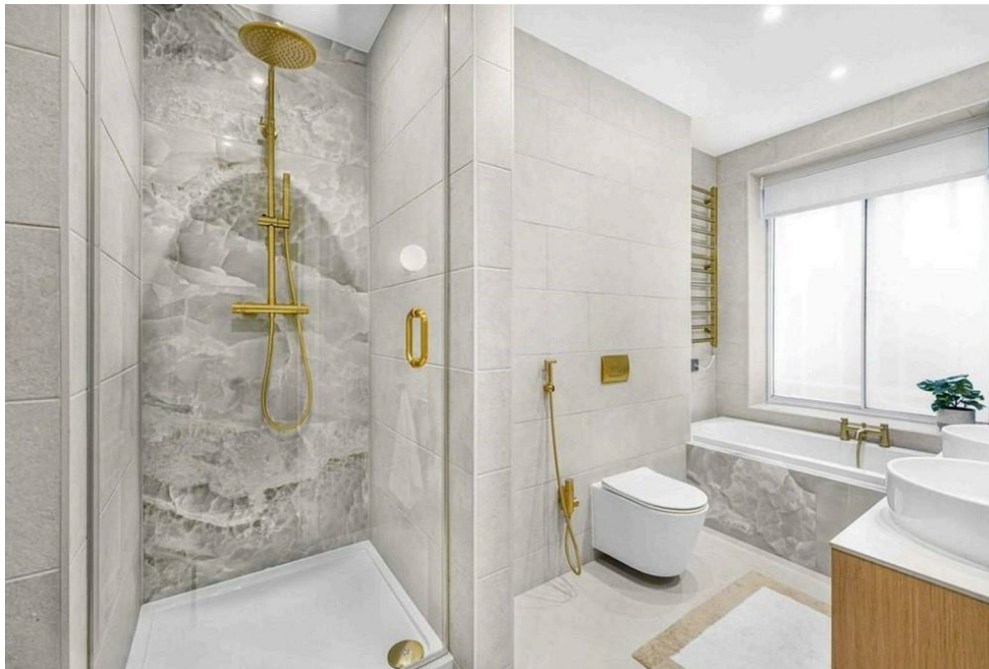
Duncan House, 86 Portland Place,
Marylebone, W1B

£4,300 Per Week,

NAPIER WATT

T: 0207 935 0011
E: enquiries@napierwatt.co.uk
W: napierwatt.co.uk

35 Berkeley Square, Mayfair, London, W1J 5BF







Description

A spacious lateral apartment on one of Marylebone's most prestigious streets. This bright home offers generous open living space, including a dual-aspect living and dining room with herringbone parquet flooring, a separate fully-fitted kitchen with modern appliances, and five double bedrooms, all with en-suite bathrooms and built-in storage. There is also a sixth single bedroom or office space at the rear. The property includes a day porter and lift access. Located on Portland Place, it is close to the shops and restaurants of Marylebone High Street, Oxford Street, and Regent Street. Available, furnished.

5 Bedrooms : 5 Bathrooms : Guest WC : Reception Room/Dining Room : Kitchen : Porter : Westminster
Council Tax Band H : EPC Rating C

Key Features

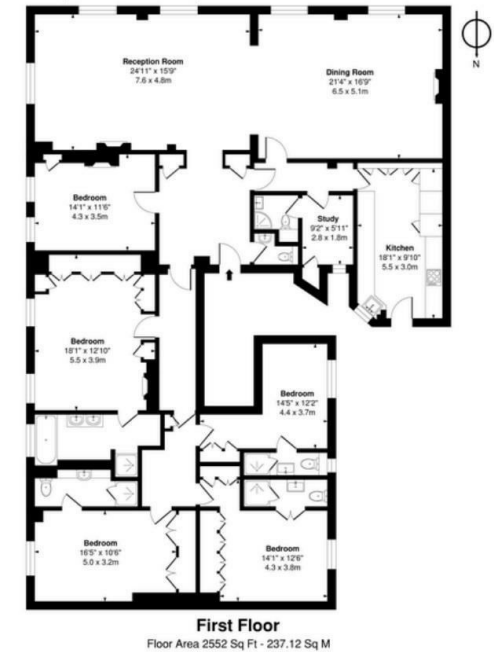
- DAY PORTER
- FIRST FLOOR WITH LIFT
- NEWLY REFURBISHED
- FURNISHED

Terms

Fees & Charges: Tenancies exceeding £100,000 Per annum £480 inc VAT, Tenancies where a company is a tenant £480 Inc VAT.

Duncan House, W1B

Approx. Gross Internal Area 2552 Sq Ft - 237.12 Sq M



IMPORTANT: We would inform prospective purchasers that these sales particulars have been prepared as a general guide only. A detailed survey has not been carried out, nor the services, appliances and fittings tested. Room sizes should not be relied upon for furnishing purposes and are approximate. If floor plans are included, they are for guidance only and illustration purposes only and may not be to scale. If there are any important matters likely to affect your decision to buy, please contact us before viewing the property.